



2007 Mainsaver User Conference to be Held in Anaheim, California.

Mainsaver Software has announced that the 2007 User Conference will be held in Anaheim, California between March 28 and March 30. The conference will be headquartered at the Anaheim Marriott at 12015 Harbor Boulevard, Garden Grove, CA.

Attendees at the 2007 User Conference can expect:

- New Features in Mainsaver's 10.1 release
- Roundtable discussions focused by Mainsaver module
- Exploring Mobile Mainsaver 10.1 Wireless and Timecard Features
- Introduction to new Report Capabilities
- Interactive Workshops on new features in Mainsaver
- Insight into future Mainsaver releases
- Direct access to Mainsaver Development, Customer Support, and Professional Services teams

Anaheim was chosen for its warm weather during March, the famed Disneyland entertainment parks and Orange County's local golf access.

User Conference registration is available via the Mainsaver web site, <http://www.mainsaver.com>. Conference fees are \$699. An early registration discount of \$100 is available until February, 16, 2007.

Announcing the Mainsaver 2007 Training Schedule

Mainsaver Software training taught by Mainsaver Professional Services employees, with 10 years or more of field and direct Mainsaver experience will be held through out the country in 2007. Each class is highly interactive and "hands on".

The class schedule includes:

Houston	February 12 to 16
Anaheim	March 26 to 28 (Pre-Conference Training)
Chicago	June 11 to 15
San Diego	August 20 - 24
Atlanta	October 22 - 26

Class Overview:

Mainsaver System Administration Module

This class teaches all aspects of the Mainsaver System Administration Module. The students, stationed at their own PCs, will learn how to configure Mainsaver from the ground up. Students will learn how to input "seed" data - the lowest level of Mainsaver data upon which other records, such as Assets and Work Orders, are built. This "seed" data ends up being the contents of nearly all of the "pull down" fields that appear throughout Mainsaver. By populating this data correctly, students will be better equipped to make their systems easier to use. Default values will also be configured for many of the fields in Mainsaver so that records can be input more quickly and easily. System settings, such as Switches, User Security, and Work Flow Management will be covered in detail. Finally, students will learn how to maintain their data using utilities such as Work Order and Purchase Order Archiving.

Maintenance Module

This class introduces the student to all aspects of implementing and utilizing the Mainsaver Maintenance module and most of its supporting modules. The modules covered in this class include Maintenance, Time & Materials Used, Personnel, Preventative Maintenance, Dispatch, Shop Floor, and Management reports. The students, stationed at their own PCs, will learn how to develop a model maintenance program to better understand Mainsaver functionality. By building new master records from their own data, they will create a functional Work Order and PM system that they will use throughout the class, culminating in management reports that illustrate the results of their input throughout the week.

Inventory & Purchasing Modules

This class introduces the student to all aspects of implementing and utilizing Mainsaver's Inventory and Purchasing Modules. The students, stationed at their own PC's, will learn how to develop an effective Inventory program and Purchasing System. Upon completion of the class, the student will have all of the tools required to implement and effectively use Mainsaver's Inventory and Purchasing modules. The student will learn methods and techniques for creating inventory transactions, physical inventory and how to plan and record materials used on the job with Mainsaver's Work Order and PM modules.



Mainsaver Helps Cure Cancer at the M.D. Anderson Facility

M.D. Anderson announced significant advances in the elimination of “left over” parts through utilization of the Mainsaver CMMS software product. Through planning materials and inventory control, M.D. Anderson increased traceable inventory stored in store rooms by 24% while virtually eliminating "left over" parts inventories. This traceable inventory in store rooms is immediately accessible to craftsmen.

M.D. Anderson reports doubling the total dollar volume of traceable inventory charged to work orders and a steady trend of about 7% per month increase. The total inventory valuation has only increased 12.2%. This illustrates that the inventory throughput rate has doubled and that holding time has significantly decreased.

Planners have increased the reliability of PM labor estimates by almost 10% as measured by the percent of PM work orders whose actual time charged fell within acceptable variances from the estimates. In addition, the work groups have increased the allocation of labor hours charged to PM work orders by almost 50%.

The Mainsaver CMMS software primarily supports the Facility Management group who manage the maintenance of 164 buildings on two campuses comprising 9 million square feet. The various maintenance groups are responsible for the welfare of 15,000 employees and hundreds of patients each day. In addition, these buildings must meet regulatory requirements from JCAHO (Hospital accreditation agency) and the state of Texas.

About M.D. Anderson: The M.D. Anderson Cancer Center is a world class healthcare facility with a mission to eliminate cancer. It is part of the University of Texas healthcare system and is involved in cancer research and the development of new treatments and education. Patients from all corners of the world come to M.D. Anderson and the majority of patients leave the facility cancer free.



Mainsaver opens European Headquarters Center for Excellence

European Headquarters opened to meet exponential growth of Mainsaver installations throughout Europe. Klaus Schillert named, Managing Director and Helmar Lieber, Chief Technical Officer.

Mainsaver has announced the opening of its newly formed Center for Excellence in Dresden, Germany. Opened to meet the growing needs of the rapidly expanding European installed base, the new office has over 50 years of experience with the Mainsaver CMMS product. Initially, the Center for Excellence will be the lead developers of the Mainsaver 10i product. Mainsaver 10i is the first Mainsaver release to incorporate multi language support and international features and functionality.

Mainsaver, Dresden Headquarters charter:

- **Custom support for Mainsaver International distributor's, OEM's and Partners**
- **Support of US and Europe multi site installations**
- **Multi language support, including:**
 - **UK English**
 - **German**
 - **French**
 - **Spanish**
 - **Polish**
 - **Russian**
 - **Czech**
- **Service for multi time zone installation**
- **Pre-implementation, implementation and post-implementation services**
- **Customizing, language adaptations and integration**
- **Branch consulting services and implementation support for "ready to use" installations**

Inquiries can be made to: Klaus Schillert

Tel. +49 6163 912011

Mail: K.Schillert@CEB-GmbH.de



Spidex Software appointed as Master Distributor for UK and Ireland

Spidex Software is the first critical spoke in the new Mainsaver European market expansion strategy program, working closely with the newly formed Center for Excellence based in Dresden, Germany.

Mainsaver has announced the appointment of Spidex as Master Distributor for the UK and Ireland. Spidex will be headed by Jonathan Starling, formally of MVI Technology, and staffed and supported by a group of senior business and technical professionals possessing over 50 years of experience with Mainsaver Software

Spidex Software activity will have a dual focus of supporting the installed Mainsaver client base in the UK and Ireland and introducing the new 10i Mainsaver software. Spidex will initially offer local professional services such as installation and training and utilize the newly formed Center for Excellence in Dresden for custom programming and interface design.

Spidex Software contact information:

Jonathan Starling

Email: jonathan.starling@spidex.co.uk

Tel: 44 (0)121 250 3855

Mob:44 (0) 7766 755613

Homepage: www.spidexsoftware.com



CEB/SM Systems, Germany announces Joint Partnership with Hamburg Port Authority

The Mainsaver Center for Excellence, operated by CEB/SM in Hochst, Germany, has announced the formation of a joint partnership with, The Hamburg Port Authority (HPC). The partnership leverage will focus on the wide market and operational expertise of HPC and CEB/SM's breath of experience in the MRO space.

Over the past 4 years CEB/SM and HPC have successfully installed the Mainsaver CMMS software at locations through out the world. Notable installations include:

- Kimberly Clark - Germany, France, UK**
- Scott Paper - Canada**
- Dieffenbacher/Kronospan - Germany, Poland, Czech Republic, Russia**
- Ports and Container Terminals - Germany, Ghana, St. Petersburg, Russia, Chile)**
- Airports - Germany**
- Energy and Industrial power plants - Germany**
- Water and Wastewater - Germany**
- Automotive - Germany, India.**

The partnership will use the domain expertise gained from these installations as focus points in the following market sectors:

- Paper mills**
- Wood production**
- Ports and Container Terminals**
- Airports**
- Energy and power plants**
- Water and waste water treatment plants**
- Automotive parts manufacturers**

CEB/SM Systems, Germany, Announces 3 New Language Translations of Mainsaver Software

Mainsaver, Master - VAR, CEB-SM has announced the expansion of their non-English version translation of Mainsaver with the addition of Russian, Polish and Czech versions. These versions add to the already existing French, German and Spanish versions supported by CEB-SM. CEB-SM's unique maintenance solution offering which bundles together pre-implementation, implementation and post-implementation services allows installations to be fully operational in less than 30 days.

CEB-SM also announced the completion of Mainsaver installations at Dieffenbacher GmbH & Co. KG, Eppingen Weig Karton GmbH & Co. KG, and the Stuttgart Airport.

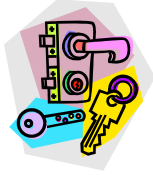


Recycling Aerospace Metals with Mainsaver Software

Metals Management Aerospace, Inc. located in Hartford, CT, a recycler of aerospace metals, such as titanium and nickel alloys announced the successful implementation of Mainsaver Software to track corrective and preventive maintenance processes.

In addition to the Mainsaver Software core products modules, Metals Management Aerospace implemented the Mainsaver Web Work Management software module. The Web Work Management module allows Metals Management operations personnel to enter requests through a web browser. Requestors are updated by email as their requests are approved and completed.

Metal Management is a world leader in the recycling of titanium for aerospace applications. The company is the sole manufacturer of ST-2001®, a titanium scrap turning product manufactured by a patented process to the highest aerospace quality level, for the production of rotor and premium grade titanium ingots and castings.



Schlage Locks Upgrades to Mainsaver 10.0

Ingersoll Rand, owner and operator of the Schlage Lock Company located in Colorado Springs, Colorado, announced the completion of their upgrade to Version 10.0 of Mainsaver CMMS software in June 2006.

The upgrade primarily focused on the Mainsaver scheduling functionality. The Mainsaver version 10.0 functionality allows Schlage Lock maintenance personnel to manage 3 facilities, 7 buildings, including remote locations over 15 miles from the main campus, and 15 crafts people. The crafts people are responsible for the support of manufacturing operations for multiple brands of Schlage security products.

Advanced scheduling functionality in Mainsaver 10.0 was used to move Maintenance activity planning from a daily to weekly event.



Direct Energy improves Plant Cost Tracking with Mainsaver

Direct Energy announced the addition of its Paris, Texas plant to the Hosted Mainsaver Application platform. The Paris, Texas plant joins Direct Energy operations in Bastrop and Frontera, currently fully operational on the Hosted Mainsaver system.

Cited by David Selsky, Commercial Upstream Manager, for Direct Energy, “the prudent use of Mainsaver is critical to the ongoing productivity and cost tracking at each plant level.”

The Hosted Mainsaver CMMS application platform includes hardware and facilities, network architecture, revision control and updating, data recovery services, and data backup/archiving. The equipment that runs the Hosted Mainsaver CMMS software is managed by the Mainsaver Network Operations Center and operational, 24 hours a day, 365 days a year.

Tech Tip

mainsaver[®] Monthly Closing

Many customers forget about the Monthly Closing function in Mainsaver System Administration. Go into application switches where users will see the current year and fiscal period according to Mainsaver and it is usually in the past.

[000 - MDACC] » Mainsaver - System Administration

File Edit Reference Settings Maintenance Reports Options Window Help

Exit PrtSetup Rpt Writer AppSwitches Main Menu

m Application Switches

General Defaults Bar Code Materials Paging/E-mail PM Purchasing Invoice Shop Work Ord...

Company Name: MDACC ACS Cutoff Percent: 80
Customer Number: 3775 ACS Cutoff Count: 3
Installation Date: 06/20/2005
Initial Maintenance Cost: 1,500.00
Current Year: 2006
Fiscal Year Periods: 12 Age Password:
Current Period: 11 Minimum Char for Password: 1
TM Grace Period: 60
Available Hours: 8
Time Card Posting By: All
Label Management:
Interconnect:
21 CFR Part 11:
Auto Supplier Numbering:
Planning and Scheduling
Pass Longest remaining Craft hours:
Show Activity tab first in WO Planning:
Import Due Date from Project Scheduling Tool:
Default Timecard Report Date to Today:

OK Cancel

Ready

To correct this **do not just edit the year and period**. First make sure that there is a correct Calendar for the current year. This is found under Settings, Calendars, Budget Period Begin Dates.

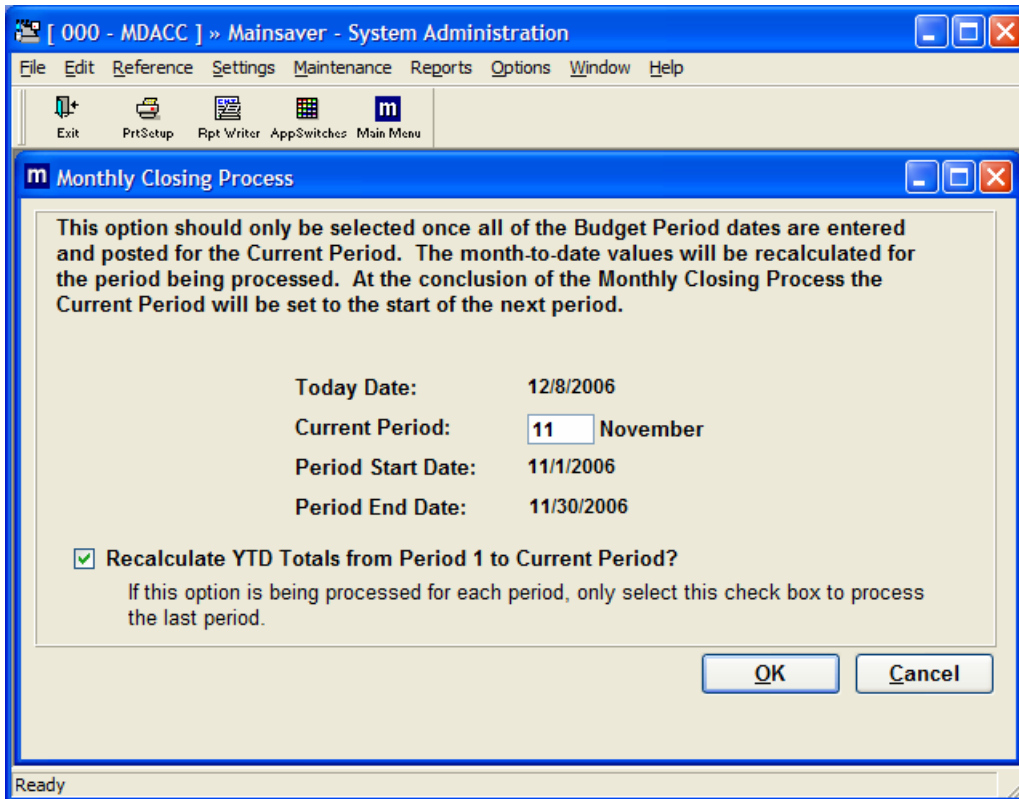
The screenshot shows the 'Budget Period Begin Dates' window in the Mainsaver - System Administration application. The window title is 'm Budget Period Begin Dates'. The 'Budget Year' is set to 2006, and the 'End of Year' is 12/31/2006. The window displays a grid of 12 periods, each with a 'Begin' date and a 'Name'.

Period	Begin	Name
Period 1	01/01/2006	January
Period 2	02/01/2006	February
Period 3	03/01/2006	March
Period 4	04/01/2006	April
Period 5	05/01/2006	May
Period 6	06/01/2006	June
Period 7	07/01/2006	July
Period 8	08/01/2006	August
Period 9	09/01/2006	September
Period 10	10/01/2006	October
Period 11	11/01/2006	November
Period 12	12/01/2006	December

At the bottom of the window, there are navigation buttons: 'Duplicate', 'Add', 'OK', and 'Cancel'. The status bar at the bottom left indicates 'Record 13 of 13'.

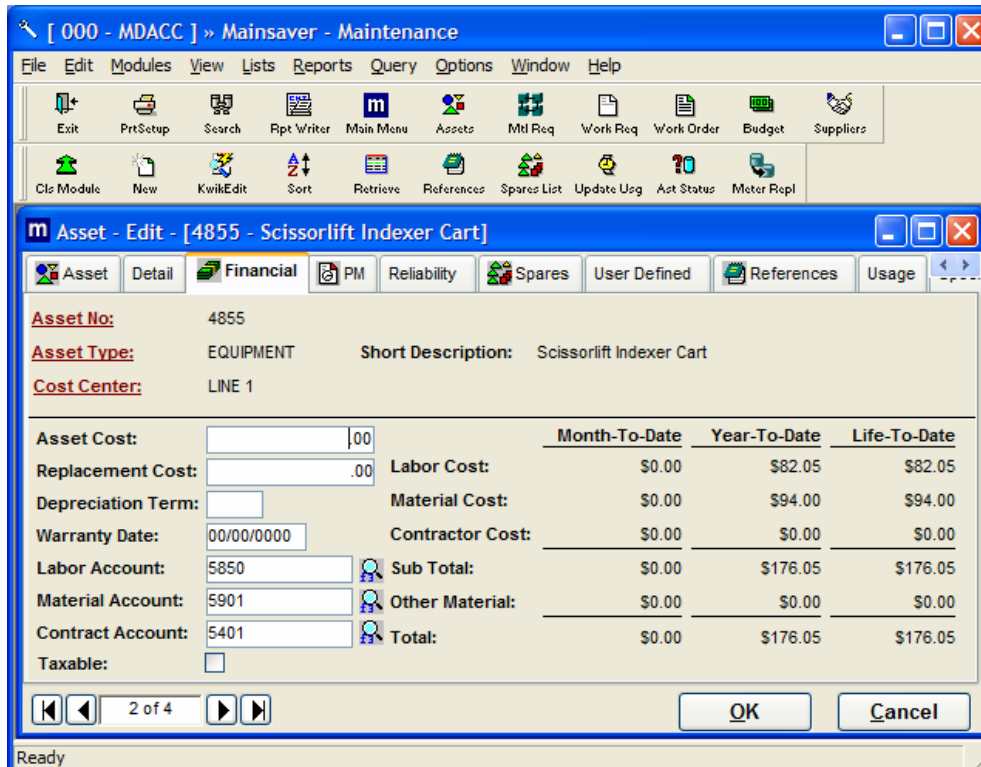
Next, use the monthly closing function to bring Mainsaver up to the current period. If you need to close out a year, set the current period to 12, then close out the old year. If you are prompted to have Mainsaver create budgets for the new budget year, answer 'No'.

Use monthly closing (Maintenance pull down menu in System Administration) to close out the current year to the proper period. In the example below, we are going to close from January 2006 to December 2006 by entering period 11. We have checked the box to recompute the YTD totals. When this box is checked, Mainsaver will review the transaction log for the previous periods and recomputed the YTD totals.



Where is the current Period reflected?

1. Asset MTD and YTD totals.



2. Parts Usage statistics for YTD and Last Year.

The screenshot shows the 'Parts Master - Edit' window for item DRIC0001. The window title is 'm [000 - MDACC] » Mainsaver - Materials'. The menu bar includes File, Edit, Modules, View, Lists, Reports, Query, Options, Window, and Help. The toolbar contains icons for Exit, PrtSetup, Search, Rpt Writer, Main Menu, Parts Matr, Transactns, Mtl Recon, Suppliers, Detail Lock, and WhereUsed. The window is divided into several sections:

- Stock Number:** DRIC0001
- Description:** Drive, Cable Reel, High Voltage, ACS601-0011-4-S00B1700801 Cranes 11 & 12
- Part Number:** ACS600
- Inv or Expense:** INVENTORY (dropdown menu)
- Taxable?**
- YTD Usage:** 1.0000
- Last Year Usage:** 1.0000
- Cost Center:** [Empty field]
- YTD Turns:** [Empty field]
- Last Year Turns:** [Empty field]
- Account:** [Empty field]
- YTD Stockouts:** [Empty field]
- Last Yr Stockouts:** [Empty field]

Costing Rule	Total On-Hand	Value	Surcharge	Surcharge Value
<input checked="" type="radio"/> Average	0.0000	\$0.00	0 %	\$0.00
<input type="radio"/> Standard				
<input type="radio"/> Last				
<input type="radio"/> LIFO				
<input type="radio"/> FIFO				

Issue Price: \$0.00 Item Cost: .0000

8 of 10 OK Cancel

3. Management Graphs.

mainsaver® Monthly Closing

Many customers forget about the Monthly Closing function in Mainsaver System Administration. Go into application switches where users will see the current year and fiscal period according to Mainsaver and it is usually in the past.

[000 - MDACC] » Mainsaver - System Administration

File Edit Reference Settings Maintenance Reports Options Window Help

Exit PntSetup Rpt Writer AppSwitches Main Menu

m Application Switches

General Defaults Bar Code Materials Paging/E-mail PM Purchasing Invoice Shop Work Ord...

Company Name: MDACC ACS Cutoff Percent: 80
 Customer Number: 3775 ACS Cutoff Count: 3
 Installation Date: 06/20/2005
 Initial Maintenance Cost: 1,500.00
 Current Year: 2006
 Fiscal Year Periods: 12
 Current Period: 11
 TM Grace Period: 60
 Available Hours: 8
 Time Card Posting By: All
 Label Management:
 Interconnect:
 21 CFR Part 11:
 Auto Supplier Numbering:

Age Password:
 Minimum Char for Password: 1

Planning and Scheduling
 Pass Longest remaining Craft hours:
 Show Activity tab first in WO Planning:
 Import Due Date from Project Scheduling Tool:
 Default Timecard Report Date to Today:

OK Cancel

Ready

To correct this **do not just edit the year and period**. First make sure that there is a correct Calendar for the current year. This is found under Settings, Calendars, Budget Period Begin Dates.

Budget Period Begin Dates

Budget Year: End of Year:

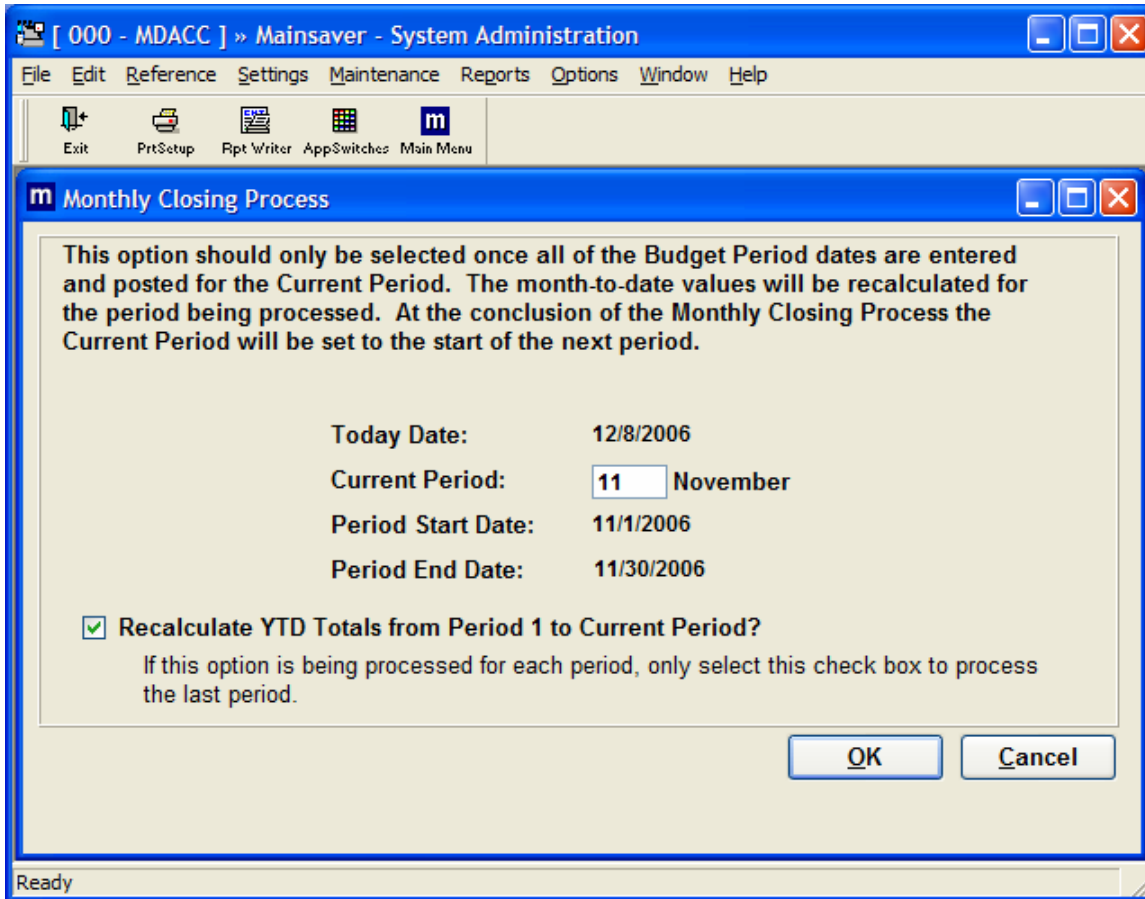
Period	Begin	Name
Period 1	01/01/2006	January
Period 2	02/01/2006	February
Period 3	03/01/2006	March
Period 4	04/01/2006	April
Period 5	05/01/2006	May
Period 6	06/01/2006	June
Period 7	07/01/2006	July
Period 8	08/01/2006	August
Period 9	09/01/2006	September
Period 10	10/01/2006	October
Period 11	11/01/2006	November
Period 12	12/01/2006	December

13 of 13

Record 13 of 13

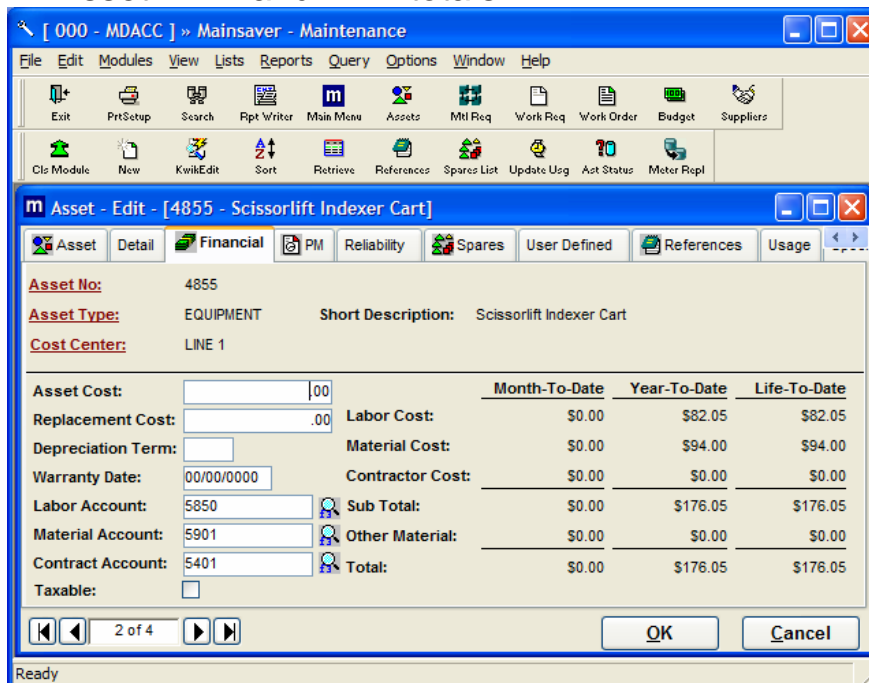
Next, use the monthly closing function to bring Mainsaver up to the current period. If you need to close out a year, set the current period to 12, then close out the old year. If you are prompted to have Mainsaver create budgets for the new budget year, answer 'No'.

Use monthly closing (Maintenance pull down menu in System Administration) to close out the current year to the proper period. In the example below, we are going to close from January 2006 to December 2006 by entering period 11. We have checked the box to recompute the YTD totals. When this box is checked, Mainsaver will review the transaction log for the previous periods and recomputed the YTD totals.



Where is the current Period reflected?

4. Asset MTD and YTD totals.



5. Parts Usage statistics for YTD and Last Year.

[000 - MDACC] » Mainsaver - Materials

File Edit Modules View Lists Reports Query Options Window Help

Exit PrtSetup Search Rpt Writer Main Menu Parts Metr Transactns MH Recon Suppliers Detail Locn WhereUsed

Clz Module New KwikEdit Item Status Sort Retrieve

m Parts Master - Edit - [DRIC0001]

Stock Detail Location Order Point Supplier **Financial** Where Used User Defined Reference

Stock Number: DRIC0001 **Description:** Drive, Cable Reel, High Voltage, ACS601-0011-4-S00B1700801 Cranes 11 & 12

Part Number: ACS600

Inv or Expense: **INVENTORY** Taxable? YTD Usage: 1.0000 Last Year Usage: 1.0000

Cost Center: YTD Turns: Last Year Turns:

Account: YTD Stockouts: Last Yr Stockouts:

Costing Rule	Total On-Hand	Value	Surcharge	Surcharge Value
<input checked="" type="radio"/> Average .0000	0.0000	\$0.00	0 %	\$0.00
<input type="radio"/> Standard				
<input type="radio"/> Last				
<input type="radio"/> LIFO				
<input type="radio"/> FIFO				
	Issue Price: \$0.00		Item Cost:	.0000

8 of 10 OK Cancel

Ready

6. Management Graphs.

